



Guide Price £450,000

4 Bedroom Detached House for sale  
4 Autumn Gardens, Wymondham





## Overview

Discover this immaculate, move-in-ready detached home, offering the ultimate in convenience, modern living, and delightful open views to the front. Chain free and perfectly prepared for its new owners, this property is a must-see! Click [here](#) to find out more...



## Key Features

- No Onward Chain
- Modern 4-Bedroom Detached Home
- Open Views to the Front and Immaculate Garden
- Turnkey Condition Inside and Out
- Bright and Spacious Rooms Throughout
- Non-Overlooked Landscaped Garden
- Three-Car Driveway and Extensive Single Garage
- Easy Reach of Outstanding Schools, Town Centre and Transport Links





Welcome to Autumn Gardens, Wymondham. Immaculately presented, envisioning this 4- bedroom home as your future residence will come easily! While natural brightness follows you room to room, as do the open views to the front for an enriched sense of space.

Due to its L-shaped layout, this home flows flawlessly offering an extensive kitchen-breakfast room and two good-sized reception rooms. Of course, storage and a cloakroom are present. Likewise, the first floor provides a substantial principal bedroom with ensuite shower room, three further bedrooms, a family bathroom and storage cupboard off of a spacious landing. With such balanced room sizes, there is ample flexibility in how the layout can be used to best suit your family dynamic.

To the outside, the garden is completely hidden from neighbouring windows for utmost privacy which can be enjoyed across three patios and an impeccable lawn. From here, you can access the driveway, fit to accommodate three vehicles, and the extensive single garage currently used as storage and home gym (complete with light and power).

As for location, homeowners are drawn here for its family-oriented community set within easy distance (on foot, bicycle and car) of Wymondham town centre, outstanding schools, train station and reliable bus routes. Local parks, Co-Op, Hustle Gym and pharmacy are too, conveniently placed. If Wymondham College is high on your list of desirables, you will find a high proportion of local households are a part of that community too.

Call us 24/7 to see what lies in store for you on Autumn Gardens.

What3Words: ///appetite.toasters.writers



**Kitchen-Breakfast Room**

22' 4" x 11' 3" (6.83m x 3.43m)

Tiled flooring, three uPVC double-glazed windows with fitted roller blinds, uPVC double-glazed patio doors with curtain pole, fitted base and wall-mounted units including separate island, integrated gas hob, extractor hood and dual oven, separate cupboards housing the combi gas boiler and consumer unit, spotlights plus hard-wired ceiling light, two radiators and multiple sockets plus USB.

**Living Room**

16' 5" x 14' 11" (5.01m x 4.57m)

Fitted carpet, two uPVC double-glazed windows: one with fitted roller blind, the other with a deep sill and curtain pole, uPVC patio doors with curtain pole, two ceiling lights, two radiators, multiple sockets and TV aerial.

**Dining Room**

12' 9" x 10' 0" (3.91m x 3.05m)

Fitted carpet, two uPVC double-glazed windows: one with fitted roller blind, the other with a deep sill and curtain pole, ceiling light, radiator and multiple sockets.

**Cloakroom**

6' 3" x 3' 5" (1.93m x 1.05m)

Tiled flooring, obscured uPVC double-glazed window with fitted Roman blind, wash hand basin with splashback tiling, toilet, radiator and ceiling light.

**Primary Bedroom**

19' 11" x 11' 3" (6.09m x 3.43m)

Fitted carpet, dual-aspect uPVC double-glazed windows with fitted roller blinds and curtain poles, two ceiling lights, radiator and multiple sockets plus USB.

**Ensuite Shower Room**

7' 8" x 5' 8" (2.36m x 1.75m)

Tiled flooring and walls, obscured uPVC double-glazed window with fitted roller blind, shower cubicle with sliding glass doors, wash hand basin, toilet, heated towel rail and spotlights.

**Bedroom Two**

14' 9" x 9' 10" (4.50m x 3.01m)

Fitted carpet, dual-aspect uPVC double-glazed windows with curtain poles, ceiling light, radiator and multiple sockets.

**Bedroom Three**

11' 1" x 10' 0" (3.40m x 3.05m)

Fitted carpet, two uPVC double-glazed windows: both with fitted roller blinds, largest with curtain pole, ceiling light, radiator and multiple sockets.

**Bedroom Four**

11' 8" x 8' 10" (3.56m x 2.70m)

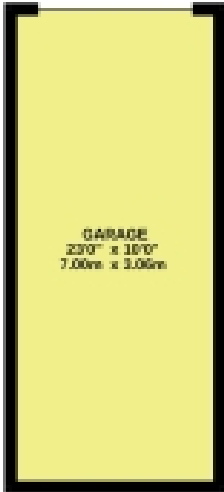
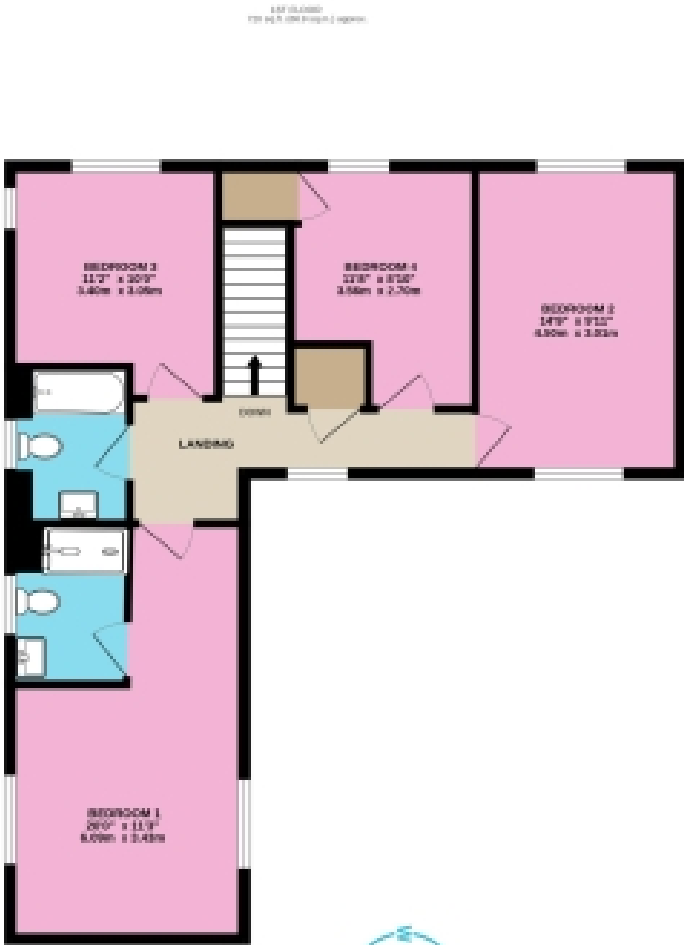
Fitted carpet, uPVC double-glazed window with fitted roller blind, built-in storage cupboard over stairs, ceiling light, radiator and multiple sockets.

**Family Bathroom**

7' 6" x 5' 8" (2.29m x 1.75m)

Tiled flooring, obscured uPVC double-glazed window with fitted roller blind, wash hand basin with splashback tiling, bath with shower nozzle, heated towel rail and spotlights.

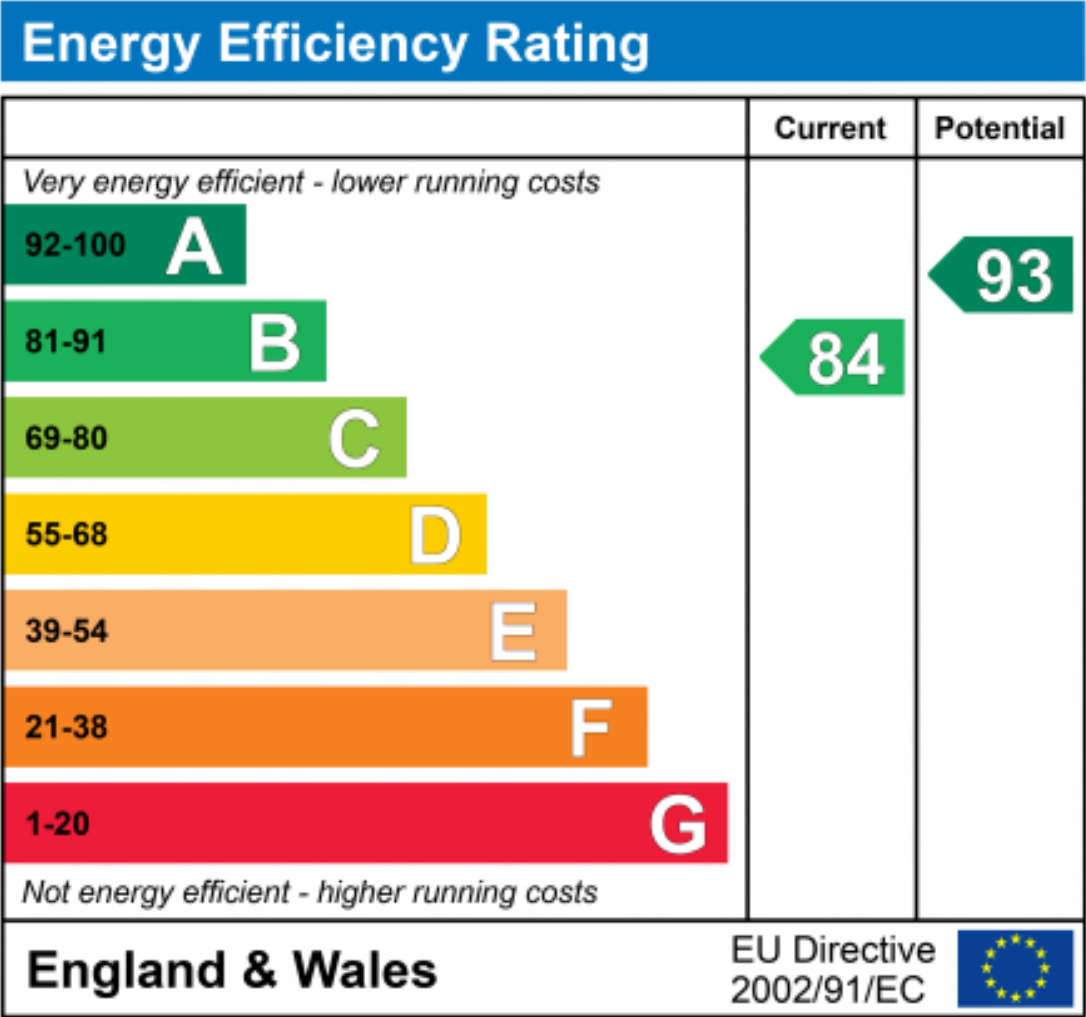
# Floorplans



DETACHED 4-BEDROOM HOUSE

TOTAL FLOOR AREA : 1693 sq.ft. (157.3 sq.m.) approx.

Whilst every attempt has been made to ensure the accuracy of the floorplan contained here, measurements of doors, windows, rooms and any other items are approximate and no responsibility is taken for any error, omission or mis-statement. This plan is for illustrative purposes only and should be used as such by any prospective purchaser. The services, systems and appliances shown have not been tested and no guarantee as to their operability or efficiency can be given.  
Made with Metropix ©2025





Marketed by EweMove Wymondham

01953 665 785 (24/7)  
wymondham@ewemove.com

